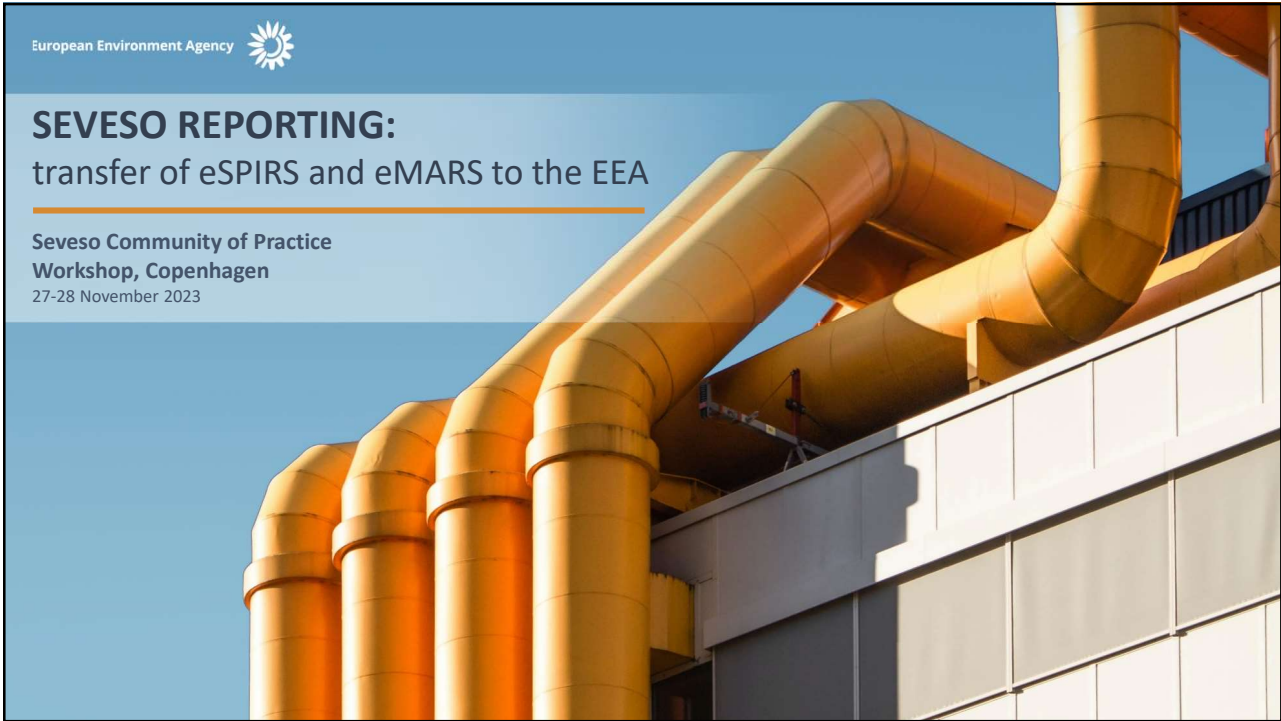




# SEVESO REPORTING: transfer of eSPIRS and eMARS to the EEA

Seveso Community of Practice  
Workshop, Copenhagen  
27-28 November 2023



## Agenda

### Day 1

**Session 1: Welcome and setting the scene**

14.30 – 15.00 Coffee break

**Session 2: Reporting of establishments according to the Seveso Directive**

17.00-17.15 Closing of the day  
19.00 Joint dinner (at own cost)/ Meet at the EEA entrance 18:45 to walk together.  
Restaurant: Carlinia, Borgergade 2

### Day 2

**Session 2 cont.: Reporting of establishments according to the Seveso Directive**

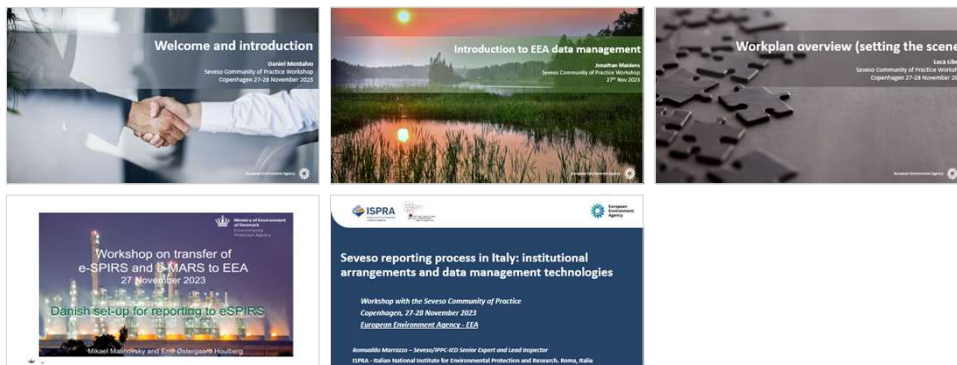
10.30-11.00 Coffee break

**Session 3: Reporting of accidents according to the Seveso Directive**

12.30 Closing of the workshop



## Session 1: Welcome and setting the scene



14.30 – 15.00

*Coffee break*

# Welcome and introduction

Daniel Montalvo  
Seveso Community of Practice Workshop  
Copenhagen 27-28 November 2023

European Environment Agency 

## Seveso team +

## Introducing the team



**Daniel Montalvo**  
Head of Group



**Maria-Elena Vicenzi**  
Assistant -  
Administrative  
Support



**Rasa Narkevičiūtė**  
Expert- Industrial  
Environmental  
Risks



**Federico  
Antognazza**  
Expert - Industrial  
Data Flows



**Luca Liberti**  
Expert - Industrial  
Data Flows



**Juan Calero**  
Expert - Industry  
and the  
Environment



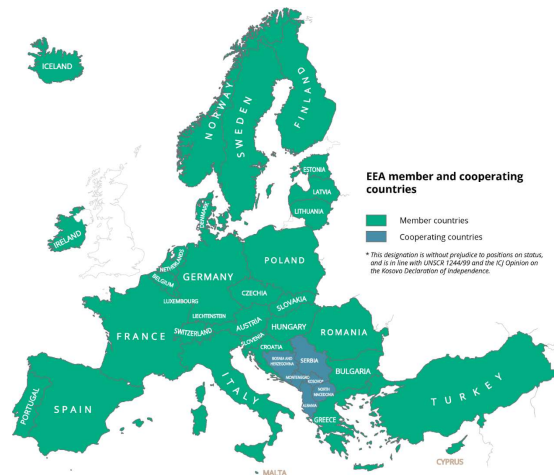
**João Costa**  
Officer - Clean  
and Circular  
Economy Support

European Environment Agency



## The European Environment Agency and EIONET

- › The EEA is an EU agency that operates at the **interface of science and policy**.
- › The EEA provides **timely, reliable, targeted and relevant** information to support sustainable development.
- › The EIONET network comprises **1800 experts** from over **400 national institutions** in **38 countries**.



European Environment Agency



## The European Environment Agency



01



02  
Collects, analyses, assesses and provides information on environmental and sustainability issues



02

03



European Environment Agency



## Seveso reporting transfer and aims of this workshop

- › New CID
  - › Transfer to the EEA
- › Aims of this workshop:
  - › to meet each other
  - › For us to gain some understanding of needs and settings of the countries
  - › For us to tell you about our data management processes and share some initial ideas.
- › We do not have all the answers – we want to hear from you

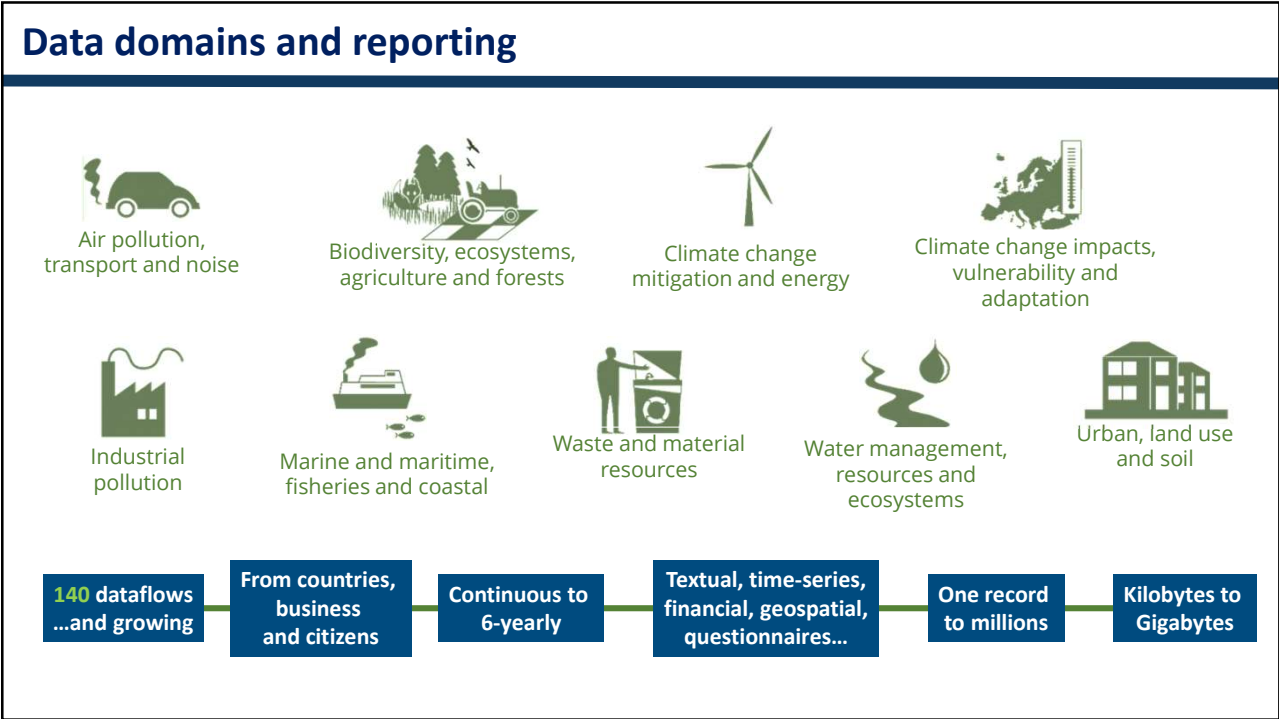
European Environment Agency





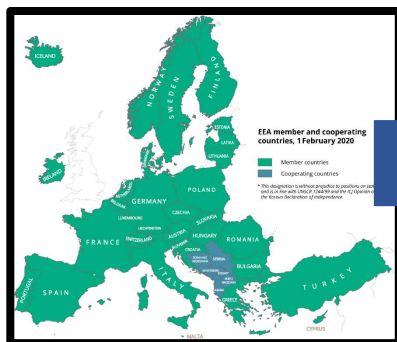
# Introduction to EEA data management

Jonathan Maidens  
 Seveso Community of Practice Workshop  
 27<sup>th</sup> Nov 2023



## Dataflow: the flow of data and information

### 1. Country deliveries



### 2. European datasets



### 3. European products



European Environment Agency








## Data delivery: reporting workflow steps



## EEA eReporting platform: Reportnet 3



## Key aspects of Quality Control

- 
**Automation**
  - › Data is tested without direct involvement of a human actor
- 
**Earliness**
  - › Detect issues as early and as close to the source as possible
- 
**Completeness**
  - › Detect as many issues as possible
- 
**Comprehensibility**
  - › Clarity, coherence and internal consistency of quality rules and validation results
- 
**Strictness**
  - › Rejection of data which does not meet expected quality criteria



## EEA led support: Eionet networks for reporting

Group	Remit
Dataflow helpdesk	Reporting guidance, responds to specific queries in reporting
Dataflow reporter groups	Broader support to dataflow – training, guidance, good practice
Dataflow expert groups	Overall steer, alignment on legislation interpretation, change management
Eionet thematic groups	Use of data in assessment – impact reporting requirements
National Dataflow Coordinators Group	Forum to monitor across dataflows and identify common issues, and look to future impacts to reporting
Eionet Group - Data and digitalisation	Discuss specific aspects of broad technological drivers for dataflow change

European Environment Agency



Thank you

Jonathan Maidens  
27th November 2023





# Workplan overview (setting the scene)

Luca Liberti

Seveso Community of Practice Workshop  
Copenhagen 27-28 November 2023

European Environment Agency



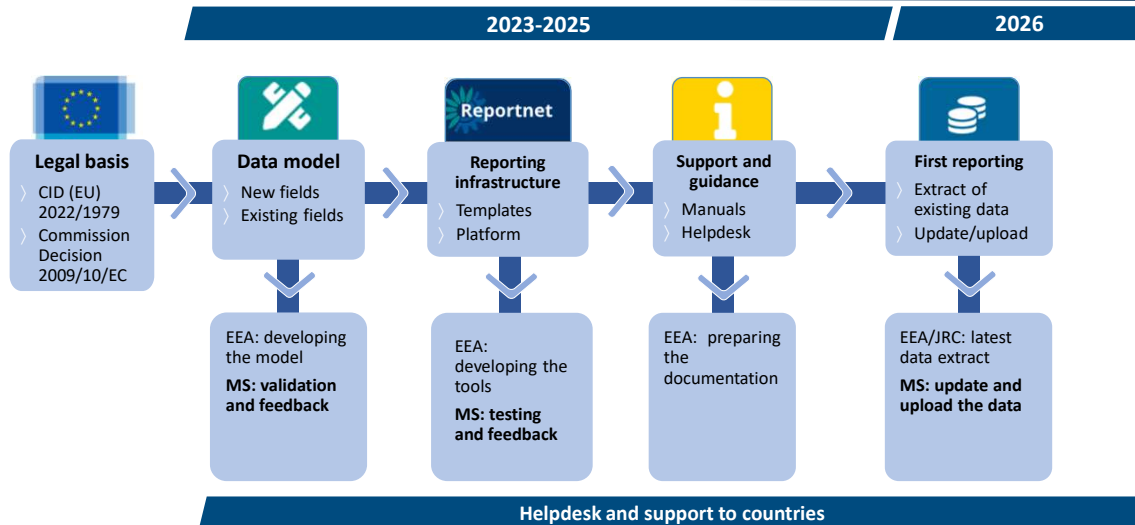
## Aims/assumptions/requirements

- › Accommodate the new legal form (CID)
- › Keep user experience similar to the existing one
- › Smooth transition
- › Consulting and informing the Community of Practice
- › Standalone reporting – integration with EU Registry

European Environment Agency



## Process



European Environment Agency



## Process more in detail - 2023

- > In 2023
  - > Analysis of CIDs
  - > Analysis existing JRC eSPIRS and eMARS platforms
  - > Initial drafting of data model specifications
- > Community of practice inputs:
  - > Feedback on data model

European Environment Agency



## Process more in detail - 2024

- › In 2024, two lines of work
  - › Test importing the data from the JRC (eSPIRS and eMARS)
  - › Setting up the reporting tools (eSPIRS and eMARS)
  
- › Community of practice inputs:
  - › Verifying JRC import tool
  - › Feedback to the reporting tools
  
- › 3 workshops online are envisaged for 2024 (more later..)



# Workshop on transfer of e-SPIRS and e-MARS to EEA 27 November 2023

## Danish set-up for reporting to eSPIRS

Mikael Malinovsky and Emil Østergaard Houlberg

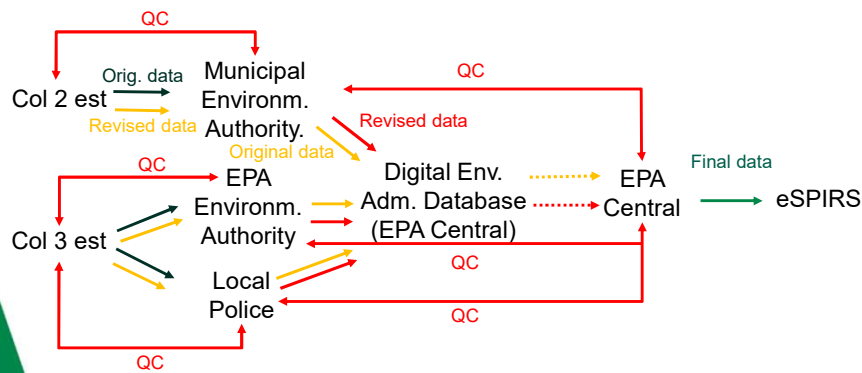
### Content:

- **Institutional arrangements in regards to establishments covered by the Seveso Directive**
- **Organisational set-up for reporting to eSPIRS**
- **Management technologies for data on Seveso establishments and reporting hereof to eSPIRS**

## Institutional arrangements in relation to the Seveso Directive

Institution	Main area of responsibility
The Ministerial Department of the Ministry of Environment*	Implementation of the Seveso Directive in Danish Environmental legislation.
Danish EPA Central Department*	Chair of the National Seveso Coordination Committee*. General guidance on the interpretation and implementation of the Seveso Legislation and guidance on environmental and health hazards.
Danish Working Environment Authority*	Implementation of the Seveso Directive in Danish legislation on working environment and guidance in relation hereto. Approval of Internal Emergency Response Plans for Seveso establishments
Danish Emergency Management*	Implementation of the Seveso Directive in Danish legislation on Physical hazards and guidance in relation hereto.
Danish Agency for Planning and Rural Development*	Statutory Order on establishment of Safety Zone around Seveso establishments and overall guidance in relation hereto.
Danish Safety Technology Authority(*)	Authority for safety permitting of manufacturing of fireworks.
The National Police(*)	Development of national guidelines on development of External emergency response plans for column 3 establishments.
Confederation of Danish Municipalities*	Representative for the 98 municipalities on issues related to the Danish implementation of the Seveso Directive.
Confederation of the Municipal Emergency Management Departments*	Representative for the 98 municipalities on issues related to the Danish implementation of the Seveso Directive.
Danish EPA – Department for permitting and inspection*	Permitting and inspection of column 3 establishments and responsible for coordination of the permitting process of the involved authorities. Information to the public on specific establishments.
Municipalities – Department for permitting and inspection	Permitting and inspection of column 2 establishments and responsible for coordination of the permitting process of the involved authorities. Information to the public on specific establishments.
Municipalities – Department for Emergency Management	Participation in the development of External Emergency Response Plans for column 3 establishments developed by the Local police.
Local Police	Development of External Emergency Response Plans for column 3 est. in coordination with the Local Emergency Management and triennial update hereof. Information to the public about the plan. Coordination of specific emergency response incidents.

## Organizational set-up for reporting to eSPIRS



# Data management technologies (I)

## Data flow

### Environmental authority local database

- Have their own database for permitting and inspection data.
- Information is typed/imported/generated in the system.
- There are two system suppliers in Denmark.
- The systems automatically exports data to DMA.

### National environmental database DMA

- Receives and saves data from the environmental authorities
- Makes it easy to get a national overview at any time.
- Demanded data can be exported in relevant formats

### eSPIRS exported dataset

- Export of data after final quality control
- Data is uploaded directly to eSPIRS



# Data management technologies (II)

## Experiences with the use of eSPIRS

### What works well:

- Overall, the eSPIRS database is intuitive to use.
- When you first locate the establishment, the relevant information is easy to find.
- The general guidance document works well.
- Easy to edit already existing establishment.
- Colored "quality" dots makes it easy to find errors.

### What could be improved:

- Filter with country code to facilitate easier search of "your own" establishments.
- Often a problem occurs with the website not being able to register that you have made an update.
- At the moment, the searching function has to be very specific.



# Thank you for your attention!

Mikael Malinovsky and Emil Østergaard Houlberg

**Environmental Protection Agency**

Business Unit

Tolderlundsvej 5 – DK-5000 Odense C

Phone: +45 7254 4000

Mail: [mipna@mst.dk](mailto:mipna@mst.dk) and [emoeh@mst.dk](mailto:emoeh@mst.dk)



# Seveso reporting process in Italy: institutional arrangements and data management technologies

*Workshop with the Seveso Community of Practice*

*Copenhagen, 27-28 November 2023*

*European Environment Agency - EEA*

*Romualdo Marrazzo – Seveso/IPPC-IED Senior Expert and Lead Inspector*

ISPRA - Italian National Institute for Environmental Protection and Research. Roma, Italia

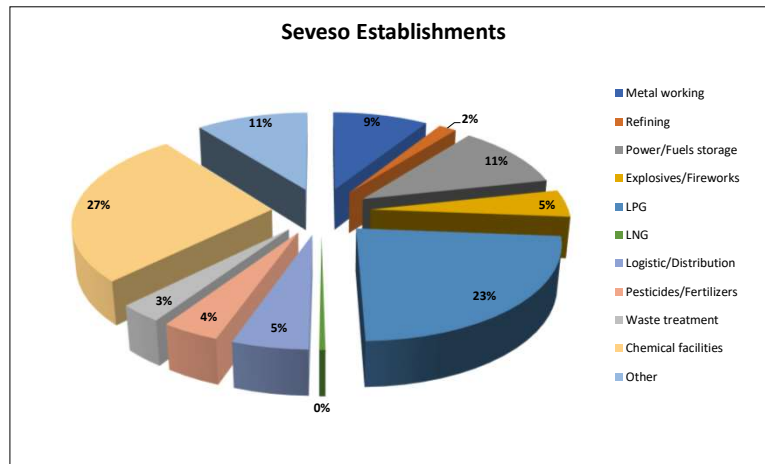
## The role of ISPRA for industrial control

ISPRA has a national role as a **technical body supporting the Ministry of Environment** in the national implementing of the **Seveso Directives** for the prevention of major accidents

- Definition of **technical contents of laws and decrees** to control Major Accidents
- Set-up of the **National Inventory of major accident hazards establishments** and other related data-bases
- **Inspections of SMS-PMA upper-tier establishments** on regular basis or after an accident
- Support for **international activities** (EU, OECD, bilateral cooperation)
- Technical coordination and **addressing of Regional Agencies** for the Protection of Environment (ARPA)
- **Collaboration with other Authorities competent** for industrial risk (Ministry of home affairs – National Fire Brigades; Department of civil protection; Ministry of infrastructures)



## The national situation



In Italy, about **1.000 sites** fall under Seveso directive (50% of UT and LT)

## Inventory management in D.Lgs. 105/2015

### Art. 5 «Functions of the Ministry of Environment», paragraph 5

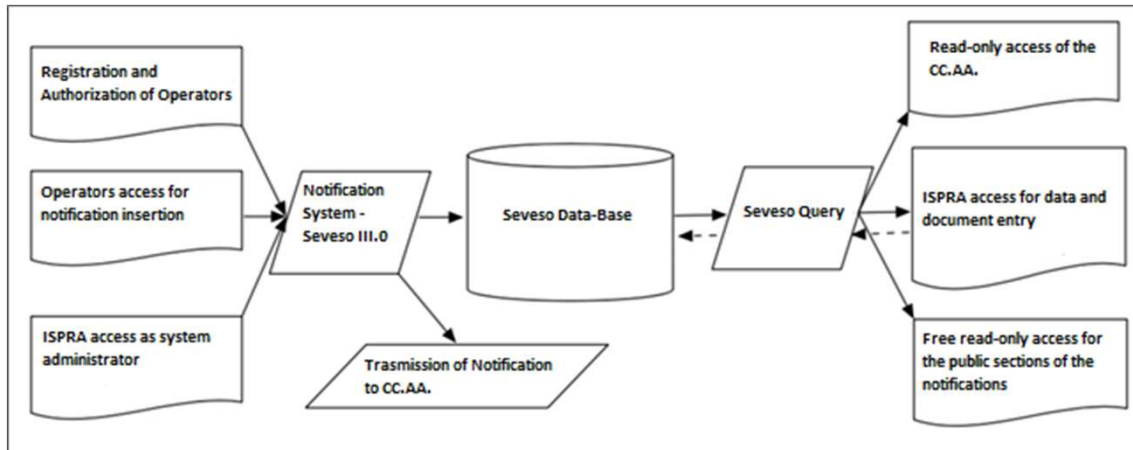
- Every four years the Ministry of Environment presents to the European Commission a four-year report on the implementation of Directive 2012/18/EU in the manner established by the Commission itself...
- The Ministry of the Environment coordinates and directs the preparation and updating, by ISPRA, of the inventory of the Seveso establishments and of the evaluation results of the safety reports and inspections. The inventory is also used for the purpose of transmitting notifications by the operators and exchanging information between the competent administrations

### Art. 13 «Notification», paragraph 5

- The notification, accompanied by the information ..., is transmitted by the operator to the recipients ... in electronic format using the services and electronic transmission tools made available through the inventory of Seveso establishments ...

**For the purposes of the obligations, ISPRA created a dedicated DB, equipped with interfaces that allow the provision of the services**

## General structure of the Seveso establishments inventory



27

## Source of data and information: the Operator

The **Operators** of Seveso establishments use the "**Notification Communication System - SEVESO III.0**" application for the preparation of the contents of the **Notification Form** and the **electronic submission** to the CC.AA.

Operators are enabled to access the application only after **accreditation** (registration and authorization) to the **notification sending system**

- Only at the conclusion of the accreditation process the **Operator will be able to access, insert and send notifications**
- **ISPRA verifies information and data** of the Operator, with relative ownership (ID and Chamber of Commerce certificate digitally signed), and **enables entry**

28

## Source of data and information: the CC.AA.

The **technical documents** are evaluated and inserted in the "**Seveso Query**" by ISPRA

- **Ministries**: communications received from, or sent to, the Operator, **various communications** relating to the activities of the Seveso establishments
- **Prefectures**: drafting of the External Emergency Plans (**EEP**) for the Seveso establishments and any drills for the verification/implementation of the EEP
- **Regional Technical Committees**: technical evaluation of Safety Reports (**SR**), **modification** with consequences for major-accident hazards, **inspection** activities on the Safety Management System of Safety (SMS) for the **Upper Tier** establishments
- **Regions**: **inspection** activities on the Safety Management System for the **Lower Tier** establishments
- **Municipalities**: activities related to Land Use Planning (**LUP**)

29

## Verification and support activities for Operators and CC.AA.

ISPRA **verifies** information and data of the **notification form**, approving it or requesting additions in case of non-compliances

ISPRA through the Seveso help-desk ([help-desknotificheseveso@isprambiente.it](mailto:help-desknotificheseveso@isprambiente.it)) provides updated, complete and accurate **answers to specific technical questions** concerning

- **Completion of the notification form**
- **Issues related to legislation and related interpretations**

Consultation with **official sources** and **forwarding to the competent Administrations** of interpretative questions relating to the application of D.Lgs. 105/2015 is however **recommended**

30

## The management of information to the public

D.Lgs. 105/2015 imposes on **Italian municipalities** the obligation to make **information** relating to industrial establishments **available to the public**, allowing **consultation and participation**

**ISPRA** implemented the "**Seveso III.0**" web service based on the **inventory of national establishments**, with data and information taken from the **Seveso notification form** sent by the operators

Municipalities can **manage information through public access** to the web application prepared by **ISPRA**

## The notification form

Some sections are **public**:

- **Plant** and Company
- State of **controls**
- **Environment**
- Installations and **inventory** of dangerous substances
- Accident **scenarios**, including safety **measures and behavior** to be followed according to **emergency plans**

ALLEGATO 5

Modulo di notifica e di informazione sui rischi di incidente rilevante per i cittadini ed i lavoratori di cui agli artt. 13 e 23

Il presente allegato è così costituito:

- SEZIONI A1 e A2 - INFORMAZIONI GENERALI
- SEZIONE B - SOSTANZE PERICOLOSE PRESENTI E QUANTITÀ MASSIME DETENUTE, CHE SI INTENDONO DETENERE O PREVISTE, AI SENSI DELL'ART. 3, COMMA 1, LETTERA n)
- SEZIONE C - DICHIARAZIONE SOSTITUTIVA DELL'ATTO DI NOTORIETÀ (art. 47 del DPR 28 Dicembre 2000, N°445)
- SEZIONE D - INFORMAZIONI GENERALI SU AUTORIZZAZIONI/CERTIFICAZIONI E STATO DEI CONTROLLI A CUI E' SOGGETTO LO STABILIMENTO
- SEZIONE E - PLANIMETRIA
- SEZIONE F - DESCRIZIONE DELL'AMBIENTE/TERRITORIO CIRCOSTANTE LO STABILIMENTO
- SEZIONE G - INFORMAZIONI GENERALI SUI PERICOLI INDOTTI DA PERTURBAZIONI GEOFISICHE E METEOROLOGICHE
- SEZIONE H - DESCRIZIONE SINTETICA DELLO STABILIMENTO E RIEPILOGO SOSTANZE PERICOLOSE DI CUI ALL'ALLEGATO 1
- SEZIONE I - INFORMAZIONI SUI RISCHI DI INCIDENTE RILEVANTE E SULLE MISURE DI SICUREZZA ADOTTATE DAL GESTORE
- SEZIONE L - INFORMAZIONI SUGLI SCENARI INCIDENTALI CON IMPATTO ALL'ESTERNO DELLO STABILIMENTO
- SEZIONE M - INFORMAZIONI DI DETTAGLIO PER LE AUTORITÀ COMPETENTI SUGLI SCENARI INCIDENTALI CON IMPATTO ALL'ESTERNO DELLO STABILIMENTO
- SEZIONE N - INFORMAZIONI DI DETTAGLIO PER LE AUTORITÀ COMPETENTI SULLE SOSTANZE ELENcate NELLA SEZIONE H

## Notification Communication System - SEVESO III.0



➤ <https://www.rischioindustriale.isprambiente.gov.it/seveso-query-105/Default.php>

33



## Safety measures and behavior in emergency plans

Methods and **protocols of managing emergency information** for the workers and public concerned in the event of a **major accident**

**Italian Seveso CC.AA.**, involved in the external emergency plans, **use the information on industrial sites taken from ISPRa web-application**

- *Some **practical examples of protocols of alerting and alarming people concerned, as indicated in the **notification form*****
- ***Information sheets distributed to the population in **public meetings and assemblies*****

34



# Protocols of alerting and alarming people

## SEZIONE I. (pubblico) - INFORMAZIONI SUGLI SCENARI INCIDENTALI CON IMPATTO ALL'ESTERNO DELLO STABILIMENTO

### I. Scenario Tipo:

RILASCIO - Rilascio tossico

Effetti potenziali Salute umana:

Intossicazione massale

Effetti potenziali ambiente:

Nessimo

### Comportamenti da seguire:

Se si è fuori casa:

- cercare riparo nel locale al chiuso più vicino;

- astenersi dal fumare;

Se si è in auto:

- allontanarsi in direzione opposta allo stabilimento;

- astenersi dal fumare;

Se si è a casa o al chiuso:

- non usare ascensori;

- astenersi dal fumare;

- chiudere le porte e le finestre che danno sull'esterno e rimanere nell'abitazione;

- fermare i sistemi di ventilazione o di condizionamento;

- prestare la massima attenzione ai messaggi trasmessi dall'esterno per allontanarsi;

- non usare il telefono né per chiedere informazioni né per chiamare parenti o amici;

- attendere che venga ripristinato il segnale di cessata emergenza.

### Tipologia di attività alla popolazione:

Desunte le situazioni di emergenza sono previste alcune modalità di informazione alla popolazione tramite:

- emittenti radio - televisioni locali;

- altoparlanti fissi o mobili su autoveicoli;

- comunicazioni a mezzo telefono, sms o social media;

- facebook Comune di Corleto Perticara: <https://it-it.facebook.com/ComuneCorleto/>

- squadre di soccorso con compiti informativi.

### Presidi di pronto intervento/soccorso:

Enti coinvolti: Prefettura, Comune di Corleto Perticara; Vigili del Fuoco; Questura; Corpo Forestale dello Stato; Carabinieri; Guardia di Finanza;

Servizio Emergenza Sanitaria Territoriale (118); gruppi e organizzazioni di volontariato, accreditate nella Funzione di Supporto

STATO DI ATTENZIONE	
CONSIGLIO V.F. DI POTENZA	<ul style="list-style-type: none"> <li>Attivazione in ordine alfabetico (secondo la priorità delle attività) in tutte le direzioni dello stesso tipo e stato evento, insieme con altre e relative contenzive di protezione, intervenendo costantemente in Prefettura.</li> <li>Disporre, secondo le proprie procedure, di una lista di tutti i numeri adempimenti attivazione in rapporto alle diverse responsabilità del gruppo dello stabilimento.</li> <li>Disporre, secondo le proprie procedure, l'informazione alla popolazione.</li> </ul>
SIRACUSI DI CORLETO PERTICARA	<ul style="list-style-type: none"> <li>Disporre la comunicazione dell'evento in tutte le agenzie (ogni tipo) informazioni del gruppo aziendale e dai Vigili del Fuoco.</li> <li>Attivazione in ordine alfabetico (secondo la priorità delle attività) in tutte le direzioni dello stesso tipo e stato evento, insieme con altre e relative contenzive di protezione, intervenendo costantemente in Prefettura. Una lista (includere l'indirizzo indicante sulla base delle informazioni ricevute).</li> </ul>
PREFETTURA DI POTENZA	<ul style="list-style-type: none"> <li>Disporre la comunicazione dell'evento in tutte le agenzie (ogni tipo) informazioni del gruppo aziendale e dai Vigili del Fuoco.</li> <li>Attivazione in ordine alfabetico (secondo la priorità delle attività) in tutte le direzioni dello stesso tipo e stato evento, insieme con altre e relative contenzive di protezione, intervenendo costantemente in Prefettura.</li> <li>Disporre, secondo le proprie procedure, di una lista di tutti i numeri adempimenti attivazione in rapporto alle diverse responsabilità del gruppo dello stabilimento.</li> <li>Disporre, secondo le proprie procedure, l'informazione alla popolazione.</li> </ul>
CONSIGLIO V.F. DI POTENZA	<ul style="list-style-type: none"> <li>Attivazione in ordine alfabetico (secondo la priorità delle attività) in tutte le direzioni dello stesso tipo e stato evento, insieme con altre e relative contenzive di protezione, intervenendo costantemente in Prefettura.</li> <li>Disporre, secondo le proprie procedure, di una lista di tutti i numeri adempimenti attivazione in rapporto alle diverse responsabilità del gruppo dello stabilimento.</li> <li>Disporre, secondo le proprie procedure, l'informazione alla popolazione.</li> </ul>
SIRACUSI DI CORLETO PERTICARA	<ul style="list-style-type: none"> <li>Disporre la comunicazione dell'evento in tutte le agenzie (ogni tipo) informazioni del gruppo aziendale e dai Vigili del Fuoco.</li> <li>Attivazione in ordine alfabetico (secondo la priorità delle attività) in tutte le direzioni dello stesso tipo e stato evento, insieme con altre e relative contenzive di protezione, intervenendo costantemente in Prefettura. Una lista (includere l'indirizzo indicante sulla base delle informazioni ricevute).</li> </ul>
PREFETTURA DI POTENZA	<ul style="list-style-type: none"> <li>Disporre la comunicazione dell'evento in tutte le agenzie (ogni tipo) informazioni del gruppo aziendale e dai Vigili del Fuoco.</li> <li>Attivazione in ordine alfabetico (secondo la priorità delle attività) in tutte le direzioni dello stesso tipo e stato evento, insieme con altre e relative contenzive di protezione, intervenendo costantemente in Prefettura.</li> <li>Disporre, secondo le proprie procedure, di una lista di tutti i numeri adempimenti attivazione in rapporto alle diverse responsabilità del gruppo dello stabilimento.</li> <li>Disporre, secondo le proprie procedure, l'informazione alla popolazione.</li> </ul>
CONSIGLIO V.F. DI POTENZA	<ul style="list-style-type: none"> <li>Attivazione in ordine alfabetico (secondo la priorità delle attività) in tutte le direzioni dello stesso tipo e stato evento, insieme con altre e relative contenzive di protezione, intervenendo costantemente in Prefettura.</li> <li>Disporre, secondo le proprie procedure, di una lista di tutti i numeri adempimenti attivazione in rapporto alle diverse responsabilità del gruppo dello stabilimento.</li> <li>Disporre, secondo le proprie procedure, l'informazione alla popolazione.</li> </ul>
SIRACUSI DI CORLETO PERTICARA	<ul style="list-style-type: none"> <li>Disporre la comunicazione dell'evento in tutte le agenzie (ogni tipo) informazioni del gruppo aziendale e dai Vigili del Fuoco.</li> <li>Attivazione in ordine alfabetico (secondo la priorità delle attività) in tutte le direzioni dello stesso tipo e stato evento, insieme con altre e relative contenzive di protezione, intervenendo costantemente in Prefettura. Una lista (includere l'indirizzo indicante sulla base delle informazioni ricevute).</li> </ul>
PREFETTURA DI POTENZA	<ul style="list-style-type: none"> <li>Disporre la comunicazione dell'evento in tutte le agenzie (ogni tipo) informazioni del gruppo aziendale e dai Vigili del Fuoco.</li> <li>Attivazione in ordine alfabetico (secondo la priorità delle attività) in tutte le direzioni dello stesso tipo e stato evento, insieme con altre e relative contenzive di protezione, intervenendo costantemente in Prefettura.</li> <li>Disporre, secondo le proprie procedure, di una lista di tutti i numeri adempimenti attivazione in rapporto alle diverse responsabilità del gruppo dello stabilimento.</li> <li>Disporre, secondo le proprie procedure, l'informazione alla popolazione.</li> </ul>



# Protocols of alerting and alarming people

Estratto dal Piano di Emergenza Esterno - Edizione 2014,  
 Ministero dell'Interno - Ufficio Territoriale del Governo di Novara  
**POLO CHIMICO INDUSTRIALE DI SANT'AGABIO**  
 ALBITE - RADICI CHIMICA - AZKO NOBEL - MEMC

**IL PERICOLO PUÒ DERIVARE DAL RILASCIO DI SOSTANZE PERICOLOSE- QUALI FUMI O GAS DI ODORE PUNGENTE, IRRITANTI E TOSSICI SE INALATI IN ALTE CONCENTRAZIONI**

\*elenco completo delle sostanze pericolose nel Piano di Emergenza Esterno sono consultabili sul sito web del Comune di Novara ([www.comune.novara.it](http://www.comune.novara.it))

**NUMERI UTILI**

Vigili del Fuoco 115

Pronto Intervento 118

Polizia 113

Carabinieri 112

Sala Operativa Prefettura Provincia 0321.685511

Polizia Municipale 0321.459252/0321.465222

**RADIO**  
 Sintonizzarsi sulle frequenze:  
 Radio Azzara (FM 92,1 - 100,5)  
 RadioBate (FM 96,3)  
 RadioCittaNovara (FM 88,7 - 88,9)  
 Radio City Novara (FM 88,00)

**SUONO DELLE SIRENE DEL POLO**  
 Inizio emergenza suono continuo per 3 minuti

CON IL CONTRIBUTO DI  
**ISTRUZIONE DI CORLETO PERTICARA**

## COSA FARE IN CASO DI EMERGENZA!

**MANTENENDO LA CALMA FINO AL SEGNALE DI CESSATA EMERGENZA!**

**COSA FARE**

- ✓ Se si è all'aperto ripararsi in luogo chiuso
- ✓ Chiudere porte e finestre occultando sprigoli con panni bagnati
- ✓ Chiudere le fessure delle porte d'aria con mastice isolante o con panni bagnati
- ✓ Fermare gli impianti di ventilazione, di condizionamento e climatizzazione dell'aria
- ✓ Se si percepiscono odori pungenti tenere un panno bagnato sugli occhi, davanti al naso e alla bocca

**COSA NON FARE**

- ✗ Andare a prendere i bambini a scuola
- ✗ Recarsi nei luoghi dell'industria
- ✗ Rifugiarsi in luoghi interrati o cantine

**SE DECISO DAL PREFETTO L'EVENTUALE EVACUAZIONE SARÀ COMUNICATA MEDIANTE GLI ALTOPARLANTI DELLE AUTO DEI VIGILI URBANI**

**EVACUAZIONE DECISA E ATTUATA SOLO A SCOPO PREVENTIVO**  
 Può riguardare un numero ridotto di abitanti nelle immediate vicinanze dell'area industriale, precedentemente informati. Viene comunicata attraverso gli altoparlanti.

Palazzetto dello Sport di Viale Kennedy

Palazzetto dello Sport di Viale Verdi

**Punti di raccolta in caso di evacuazione**

Se si scano i propri indirizzi, oppure di indirizzi indicati dalle Autorità. Oppure utilizzare i mezzi predisposti per l'emergenza, o con difficoltà motorie.

Consultare il 118 per qualsiasi emergenza sanitaria e per le persone portatrici di handicap.

**FINE EMERGENZA: SUONO CONTINUO DELLE SIRENE DEL POLO PER 90 SECONDI**

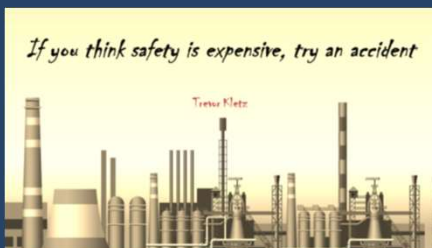


## Communicating information on the implementation of Directive 2012/18/EU: the 2019-2022 questionnaire

A **Task Force** of representatives of **national CA** was established: Ministry of Home Affairs; ISPRA; Ministry of Environment; Regions

- Groups of establishments at risk of a **domino effect**
- Production and updating of **safety reports**
- **External Emergency Plans**
- **Information** made **public** and related **participation**
- Information on **safety measures** in case of **major accident**
- National and regional **inspection plans**
- **Infringements** to the national law and **access to justice**
- Implementation **challenges** and **lessons learned**

37



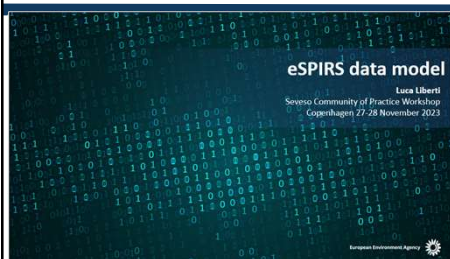
Questions... ???...

[romualdo.marrazzo@isprambiente.it](mailto:romualdo.marrazzo@isprambiente.it)

Thanks for the attention!

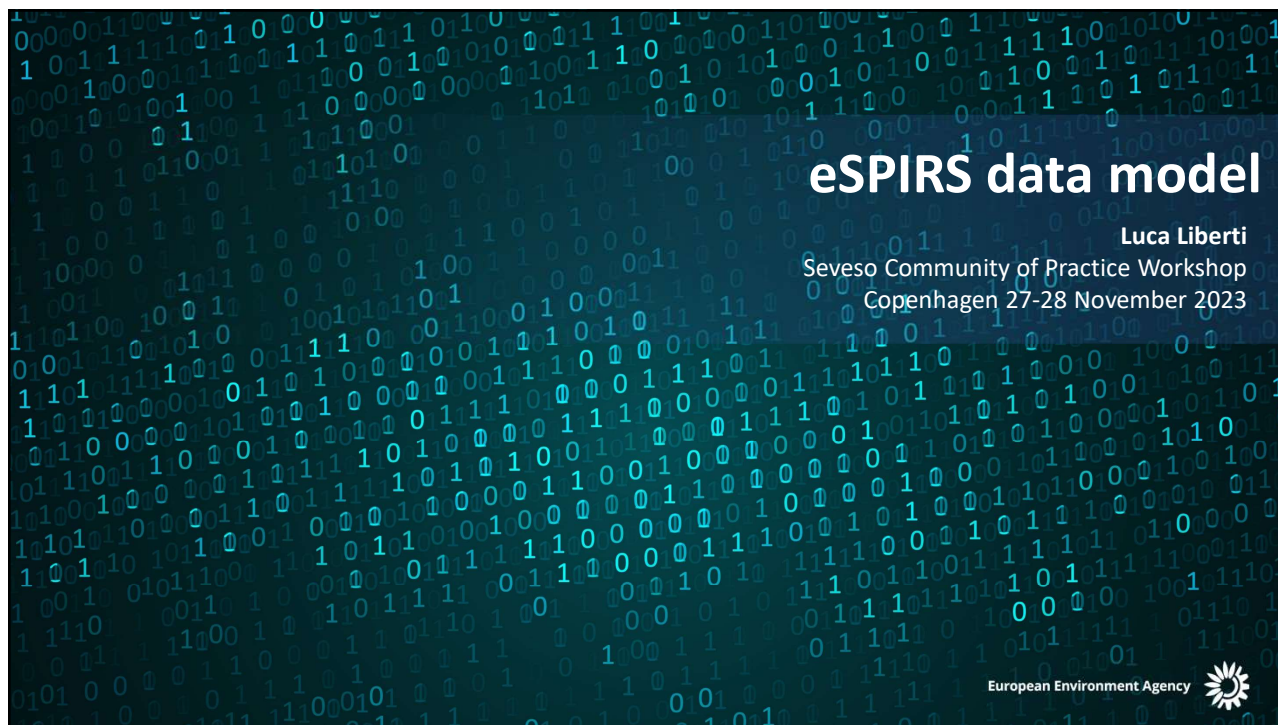


## Session 2: Reporting of establishments according to the Seveso Directive



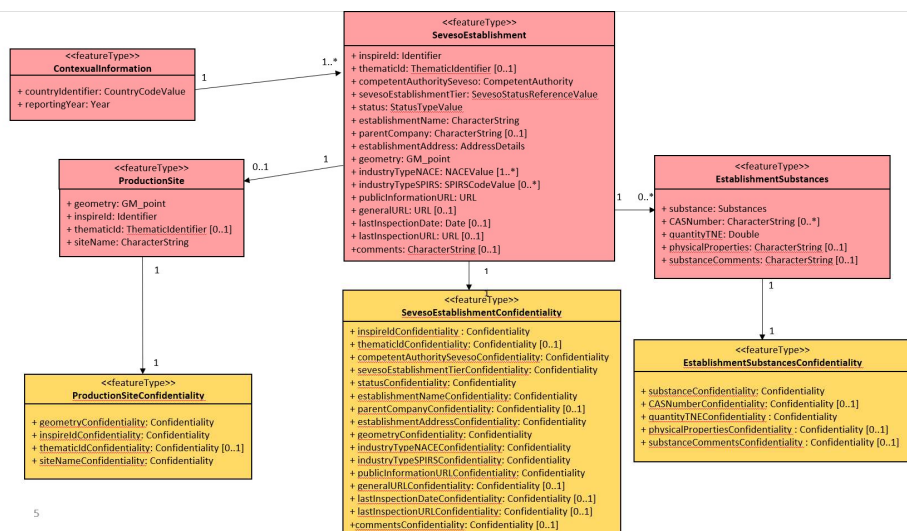
17.00-17.15 Closing of the day

19.00 Joint dinner (at own cost)/ Meet at the EEA entrance 18:45 to walk together.  
 Restaurant: [Cantina, Borgergade 2](#)



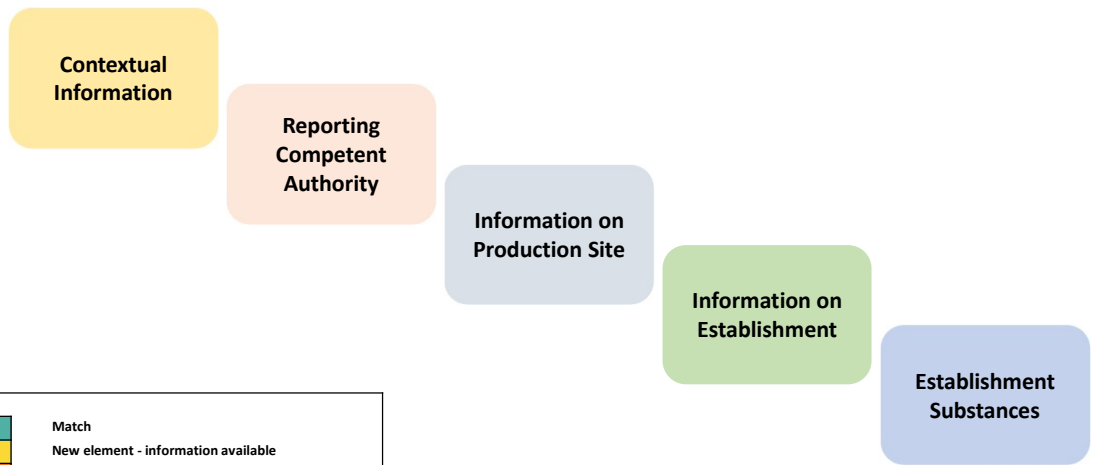


# eSPIRS data model – Data specification



5

# eSPIRS data model – New vs Old CID



	Match
	New element - information available
	New element - additional mandatory data
	New element - impact on implementation
	Not included in new CID

## eSPIRS data model – New vs Old CID content

**Contextual Information**

CID 2014 /895/EU	CID 2022/1979	
	1.1 Country Identifier	■
	1.2 Reporting Year	

■	Match
■	New element - information available
■	New element - additional mandatory data
■	New element - impact on implementation
■	Not included in new CID

European Environment Agency



## eSPIRS data model – New vs Old CID content

**Reporting Competent Authority**

CID 2014 /895/EU	CID 2022/1979	
2.1.a Reporting Competent Authority Name	2.1 Competent Authority Name	■ ■ ■ ■ ■ ■ ■ ■ ■ ■
2.1.e Reporting Competent Authority Country	2.2 Competent Authority Address - Country	
2.1.c Reporting Competent Authority City	2.2 Competent Authority Address - City	
2.1.b Reporting Competent Authority Address	2.2 Competent Authority Address - Street	
	2.2 Competent Authority Address - Building n.	
2.1.d Reporting Competent Authority Post Code	2.2 Competent Authority Address - Postal Code	
	2.3 Competent Authority Email	
	2.3 Competent Phone Number	
2.1.f Comments	2.3 Comments	

■	Match
■	New element - information available
■	New element - additional mandatory data
■	New element - impact on implementation
■	Not included in new CID






European Environment Agency



## eSPIRS data model – New vs Old CID content

### Information on Production Site

CID 2014 /895/EU	CID 2022/1979	
	3.1 InspireId localId	
	3.1 InspireId namespace	
	3.2 ThematicId Identifier	
	3.2 ThematicId IdentifierScheme	
	3.3 Geometry Latitude	
	3.3 Geometry Longitude	
	3.4 Name of Production Site	

	Match
	New element - information available
	New element - additional mandatory data
	New element - impact on implementation
	Not included in new CID






European Environment Agency



## eSPIRS data model – New vs Old CID content

### Information on Establishment 1/2

CID 2014 /895/EU	CID 2022/1979	
	4.1 InspireId localId	
	4.1 InspireId namespace	
	4.2 ThematicId Identifier	
	4.2 ThematicId IdentifierScheme	
	4.3 Seveso establishment tier	
2.2a Seveso Status	4.4 Status	
2.2b Name of establishment	4.5 Name of the establishment	
2.2c Name of parent company	4.6 Name of the parent company	
2.2.d Personalized code		
<i>Country is by default the reporting one</i>	4.7 Establishment Address - Country	
2.3.a Establishment Location - City	4.7 Establishment Address - City	
2.3.a Establishment Location - Street	4.7 Establishment Address - Street	
2.3.a Establishment Location - Street number	4.7 Establishment Address - Building n.	
Post code is collected in eSPIRS	4.7 Establishment Address- Postal Code	
2.3.d Address comments		
2.3.b Establishment Location Latitude	4.8 Geometry Latitude	
2.3.c Establishment Location Longitude	4.8 Geometry Longitude	

	Match
	New element - information available
	New element - additional mandatory data
	New element - impact on implementation
	Not included in new CID






European Environment Agency



## eSPIRS data model – New vs Old CID content

### Information on Establishment 2/2

CID 2014 /895/EU	CID 2022/1979	
2.e Industry Type NACE	4.9 Industry Type NACE	Match
2.e Industry Type SPIRS	4.10 Industry Type SPIRS	Match
	4.11 Link to website info to population	New element - additional mandatory data
2.2.f Link to website with info on establishment	4.12 Link to generic website	Match
	4.13 Date of last inspection	New element - additional mandatory data
	4.14 Link to inspection conclusions	New element - additional mandatory data
2.2.i Establishment comments	4.15 Comments	Match
2.2.g EPRTR ID		Not included in new CID
2.2.g link to EPRTR website		Not included in new CID
2.2h IED ID		Not included in new CID
2.2h link to IED website		Not included in new CID

	Match
	New element - information available
	New element - additional mandatory data
	New element - impact on implementation
	Not included in new CID






European Environment Agency



## eSPIRS data model – New vs Old CID content

### Establishment Substances

CID 2014 /895/EU	CID 2022/1979	
2.4.a Substance common name, or hazard classification	5.1 Substance common name, or hazard classification	Match
2.4.b CAS Number (Auto-filled in eSPIRS)	5.2 CAS Number	Match
2.4.c Quantity	5.3 Quantity	Match
2.4.d Physical properties (Not implemented in eSPIRS)	5.4 Physical properties	New element - impact on implementation
2.4.e Substance comments	5.5 Substance comments	Match

	Match
	New element - information available
	New element - additional mandatory data
	New element - impact on implementation
	Not included in new CID

European Environment Agency



## eSPIRS data model – Inspire Identifier

### Information on Establishment

CID 2014 /895/EU	CID 2022/1979	
	4.1 InspireId localId	
	4.1 InspireId namespace	
	4.2 ThematicId Identifier	
	4.2 ThematicId IdentifierSchema	
	4.3 Seveso establishment tier	
2.2a Seveso Status	4.4 Status	
2.2b Name of establishment	4.5 Name of the establishment	
2.2c Name of parent company	4.6 Name of the parent company	
2.2.d Personalized code		
<i>Country is by default the reporting one</i>	4.7 Establishment Address - Country	
2.3.a Establishment Location - City	4.7 Establishment Address - City	
2.3.a Establishment Location - Street	4.7 Establishment Address - Street	
2.3.a Establishment Location - Street number	4.7 Establishment Address - Building n.	
Post code is collected in eSPIRS	4.7 Establishment Address- Postal Code	
2.3.d Address comments		
2.3.b Establishment Location Latitude	4.8 Geometry Latitude	
2.3.c Establishment Location Longitude	4.8 Geometry Longitude	

European Environment Agency



## eSPIRS data model – Inspire Identifier

- › External Unique Identifier for INPIRE spatial objects
- › References the spatial object outside the scope of Seveso reporting
- › Unique within the INSPIRE domain
- › Consists in a Namespace and a LocalId
- › Persistent

European Environment Agency



## eSPIRS data model – Thematic Identifier

### Information on Establishment

CID 2014 /895/EU	CID 2022/1979	
	4.1 InspireId localId	
	4.1 InspireId namespace	
	4.2 ThematicId Identifier	
	4.2 ThematicId IdentifierSchema	
	4.3 Seveso establishment tier	
2.2a Seveso Status	4.4 Status	
2.2b Name of establishment	4.5 Name of the establishment	
2.2c Name of parent company	4.6 Name of the parent company	
2.2.d Personalized code		
<i>Country is by default the reporting one</i>	4.7 Establishment Address - Country	
2.3.a Establishment Location - City	4.7 Establishment Address - City	
2.3.a Establishment Location - Street	4.7 Establishment Address - Street	
2.3.a Establishment Location - Street number	4.7 Establishment Address - Building n.	
Post code is collected in eSPIRS	4.7 Establishment Address- Postal Code	
2.3.d Address comments		
2.3.b Establishment Location Latitude	4.8 Geometry Latitude	
2.3.c Establishment Location Longitude	4.8 Geometry Longitude	

European Environment Agency



## eSPIRS data model – Thematic Identifier

- › Similar to INSPIRE
- › Only works within the scope of the Seveso reporting
- › Unique within the Seveso reporting
- › Consists in a IdentifierScheme and an Identifier
- › Persistent in the Seveso reporting

European Environment Agency



# Links with EU Registry

Federico Antognazza  
Seveso Community of Practice Workshop  
Copenhagen 27-28 November 2023

European Environment Agency



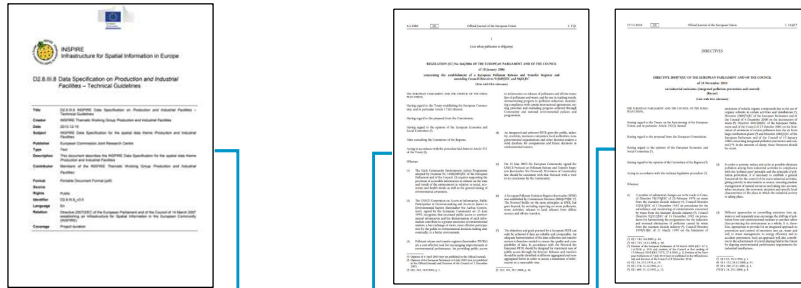
## Topics

- › What is the EU Registry about
- › Potential synergies with Seveso Reporting
- › What we know and what we can do

European Environment Agency



# The EU Registry - Concept

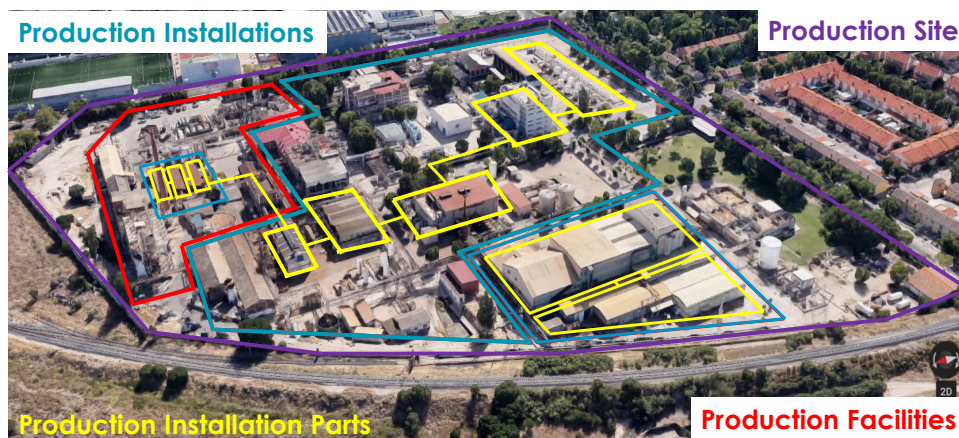


EU Registry	INSPIRE	E-PRTR	IED
ProductionSite	Correlation	Correlation	No definition provided
ProductionFacility	Correlation	Correlation	No definition provided
ProductionInstallation	Correlation	Correlation	Correlation
ProductionInstallationPart	Correlation	No definition provided	Correlation



European Environment Agency 

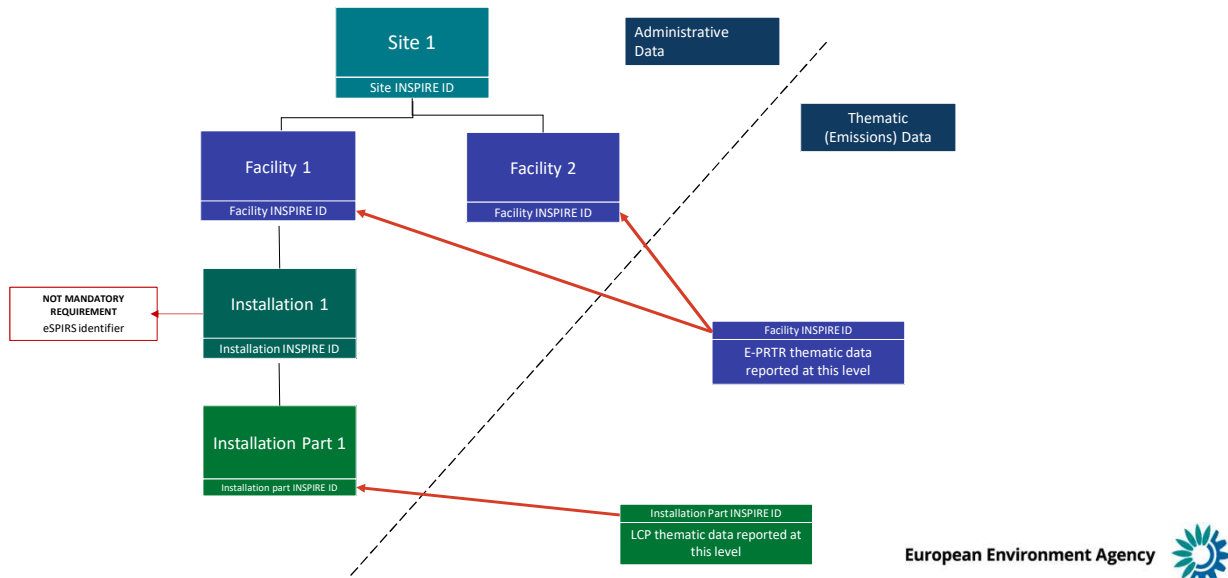
# The EU Registry - Concept



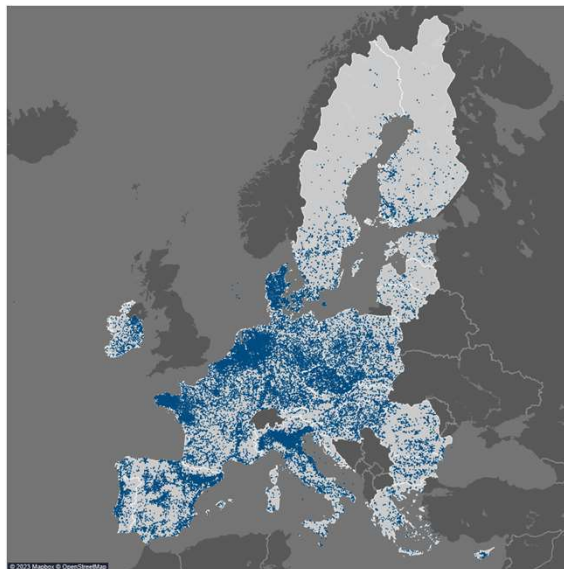
European Environment Agency 



## Reference database + thematic reporting



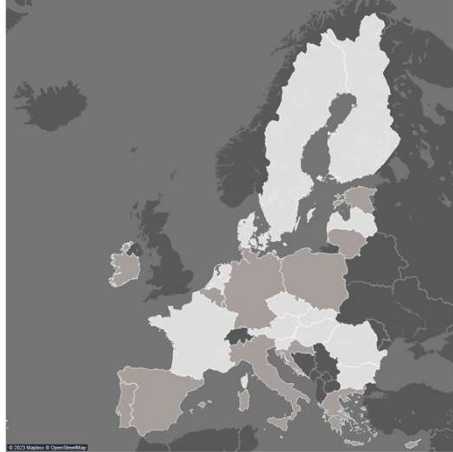
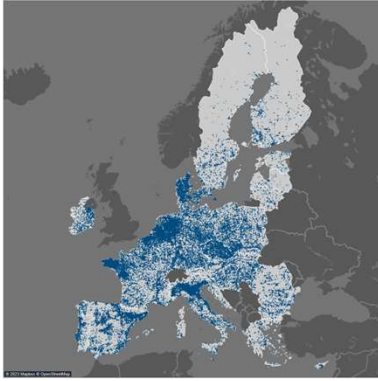
## Potential synergies



European Environment Agency



## Potential synergies

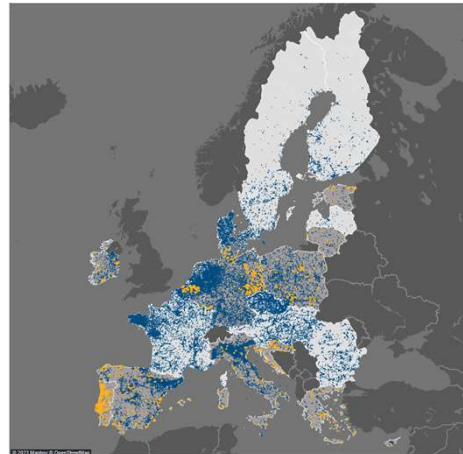
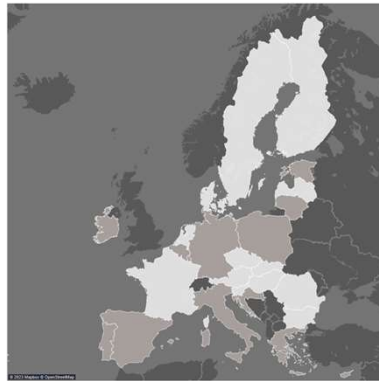
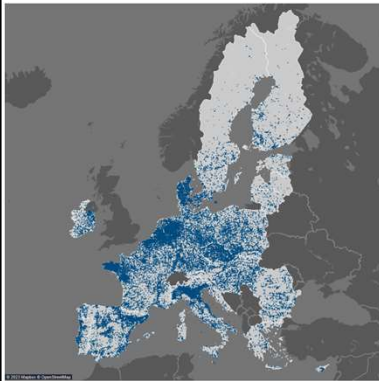


Countries which reported  
Seveso information in  
EU Registry data

European Environment Agency



## Potential synergies



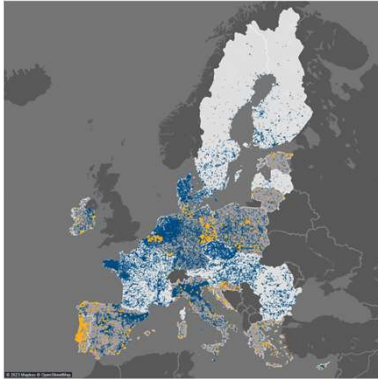
Facilities flagged as potential Seveso establishment

European Environment Agency



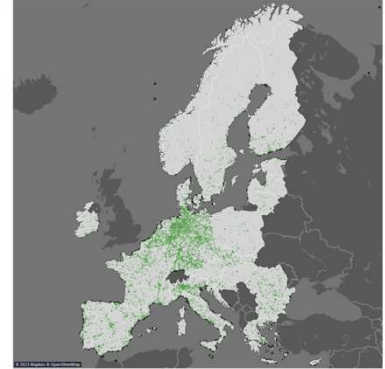
## What we can do to prepare the reporting

### EU Registry



Use coordinates to “match” Seveso establishment with existing Production Site and Production Facility Inspire ID

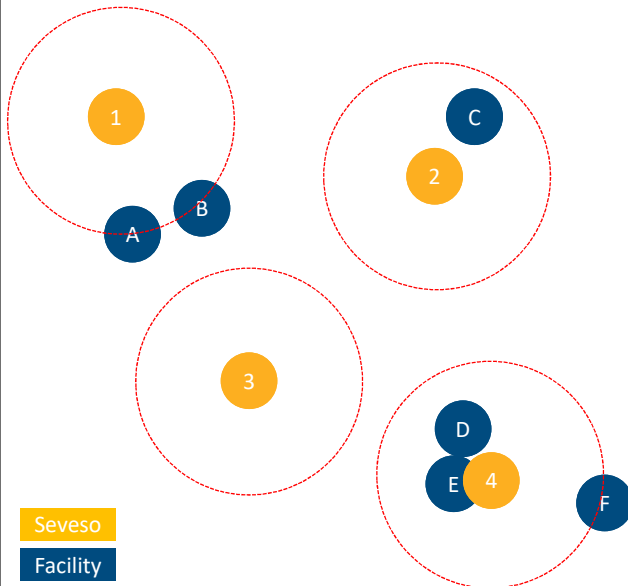
### Seveso



European Environment Agency



## What we can do to prepare the reporting



Seveso  
Facility

Seveso Establishment	Candidate EUReg Facility	Distance [m]	Match?
1	A		Yes
1	B		No
2	C		No
3			
4	D		No
4	E		Yes
4	F		No

EEA will provide the list of Seveso establishment with the candidate facilities and the distance

Seveso reporter will define which combination are a match

European Environment Agency



# The reporting platform for eSPIRS

Luca Liberti

Seveso Community of Practice Workshop  
Copenhagen 27-28 November 2023

European Environment Agency



## Reportnet 3 - Overview

1 It is a data reporting system designed to support the reporting of data flows to the EEA

2 It is a generic platform that could be configured to collect any data

3 Data is presented in a set of editable tables

4 Form functionality can be implemented

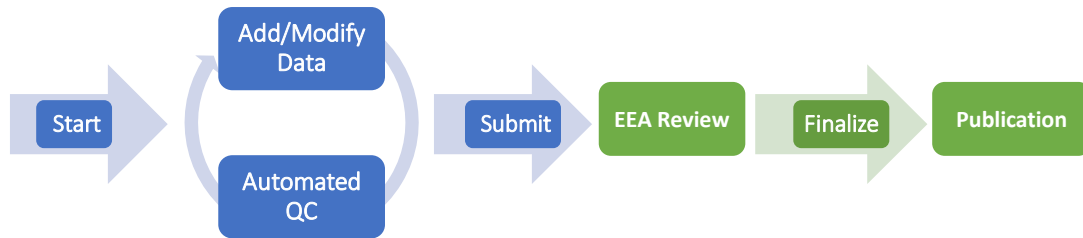
5 Support data import in various formats (natively .csv)

6 Provides automated QC

European Environment Agency



## Reportnet 3 – Reporting Workflow



European Environment Agency



## Reportnet 3 – User Interface Table View

The screenshot shows the 'List of establishments' table view in Reportnet 3. The interface includes a table with columns for 'Actions', 'Validations', 'establishmentName', 'primaryIndustryTypeNACE', 'primaryIndustryTypeSPIRS', 'sevesoEstablishmentTier', and 'Address'. The table contains three records. The 'Add record' button is highlighted with a green circle. The 'List of establishments' tab is also highlighted with a green circle.

Actions	Validations	establishmentName	primaryIndustryTypeNACE	primaryIndustryTypeSPIRS	sevesoEstablishmentTier	Address
		Establishment 1	NACE code 1	Agriculture	lower-tier	Street name, number, City
		Establishment 2	NACE code 3	Mining	upper-tier	Street, number, City
		Establishment 3	NACE code 2	Agriculture	upper-tier	Another Street, number, City

European Environment Agency



## Reportnet 3 – User Interface Forms

European Environment Agency



## RN3 QC rules – Severity level

Identification of the seriousness of the quality issue.  
From lowest to highest:



• Info



• Warning



• Error



• Blocker

### Legend



**Success** (FOR SINGLE CHECK TYPE: Quality check was successful. FOR OVERALL QUALITY: The user can submit to MAHB for publication.)



**Alert** (FOR SINGLE CHECK TYPE: Quality check identified a non-critical alert. The user can verify what to do to make the quality check successful. FOR OVERALL QUALITY: you can still submit to MAHB for publication.)



**Warning** (FOR SINGLE CHECK TYPE: Quality check identified a critical warning. The user can verify what to do to make the quality check successful or to DISMISS the warning if data is correct. FOR OVERALL QUALITY: the user cannot submit to MAHB for publication unless the quality check is either successful or dismissed.)



**Fail** (FOR SINGLE CHECK TYPE: Quality check failed because user did not fill in all mandatory fields. The user must verify what to do to make the quality check successful. FOR OVERALL QUALITY: the user has not filled in at least one mandatory field. The user cannot submit to MAHB for publication unless the quality check is successful.)



**Dismissed** (ONLY FOR SINGLE CHECK TYPE: The user has dismissed a warning)

European Environment Agency



## RN3 QC rules – Type

Reportnet 3 has three types of QC rules, based on which element in the hierarchy of the dataset structure is the focus of the rule



- Field



- Record (or Row)



- Table

European Environment Agency



## Reportnet 3 – User Interface Validation

1 List of establishments ▲ x 1 Contextual information x 2 Competent Authority ▲ x 3 Seveso establishment production site ▲ x 4 Establishment information ▲ x 5 Substances x +

Import definition Export definition Add unique constraint Add row constraint

Table description

Table description

Forms 0/10000

Import table data Export table data Delete table data Show/Hide columns Validation filter

Actions	Validations	establishmentName	primaryIndustryTypeNACE
	▲	Establishment 1	▲
	▲	Establishment 2	▲
	▲	Establishment 3	▲

European Environment Agency



## Reportnet 3 – User Interface Validation

Entity ↕	Table ↕	Field ↕	Code ↕	Level error ↕	Message ↕	Number of records ↕
FIELD	List of establishments	primaryindustryTypeNACE	FC146 ⓘ	<b>ERROR</b>	The value must not be missing or empty	3
TABLE	3 Seveso establishment production site		TB3 ⓘ	<b>BLOCKER</b>	Mandatory table has no records	1

European Environment Agency



## Exchange on the functionality of the system

Break-out groups  
Seveso Community of Practice Workshop  
Copenhagen 27-28 November 2023



European Environment Agency





## Intro to the activity

---

- Aims:
  - To understand better the setup in the countries
  - To understand how the countries find the current reporting system
  - To hear reflections on identifying establishments

->This will help guide EEA in preparing the systems

European Environment Agency



## Intro to the activity

---

- What we will do
  - Split into 3 groups
  - Facilitated discussion

European Environment Agency



## Key themes

- Experiences with current system (15-20 mins)
- Country setup (15-20 mins)
- Reflections and experiences on identifiers (ca. 15 min)

European Environment Agency



## Session 2 cont.: Reporting of establishments according to the Seveso Directive



10.30-11.00

*Coffee break*

# Results of the exchange

Plenary

Seveso Community of Practice Workshop  
Copenhagen 27-28 November 2023



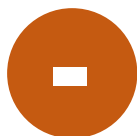
European Environment Agency



## Group discussion results - Current platform



- > Interface helping you, tooltip
- > Intuitive
- > Having a separate reporter and approver role is useful



- > Bulk import limitation
- > Loading errors
- > Downloaded Excel missing data

European Environment Agency



## Group discussion results - Reporting practices

- › Many/most report **yearly**
- › Relevant to know **which year** reporting refers to
- › **Data collected** either from counties/regions or sometimes from operators and via inspections
- › Difference in approach towards **non-mandatory** data
  - › E.g., depending on national legislation
- › Difference in approach towards **confidentiality**
  - › Some more discussion could be useful

European Environment Agency



## Group discussion results - Other

### Identifiers

- Identification of establishments is very context dependent
  - Some national level IDs
  - Some countries have none
- Change of ID – many approaches

### NACE-SPIRS

- Some concerns on having NACE as mandatory
- Others use it commonly in statistics

European Environment Agency





**Główny Inspektorat  
Ochrony Środowiska**

## **Reporting under SEVESO III Directive POLAND**

**Workshop with the Seveso Community of Practice  
Copenhagen, 27-28 November 2023**

**Paweł Dadasiewicz**  
Head of Major accidents Prevention Unit  
Chief Inspectorate of Environmental Protection

81

### ***Polish Inspection of Environmental Protection***

*Inspection of Environmental Protection (IEP) is established to control compliance with environmental legislation and to study and assess the state of the environment.*

*IEP is obliged to:*

- ***inspect business entities using the environment,***  
*via: controlling compliance with environmental protection regulations as well as with decisions (permits) specifying the conditions of using the environment,*
- ***conduct the State Environmental Monitoring,***
- ***conduct laboratory activities*** *(carrying out research, including sampling, measurement and analyses for the purposes of the State Environmental Monitoring and inspection activities,*
- ***major accidents prevention.***



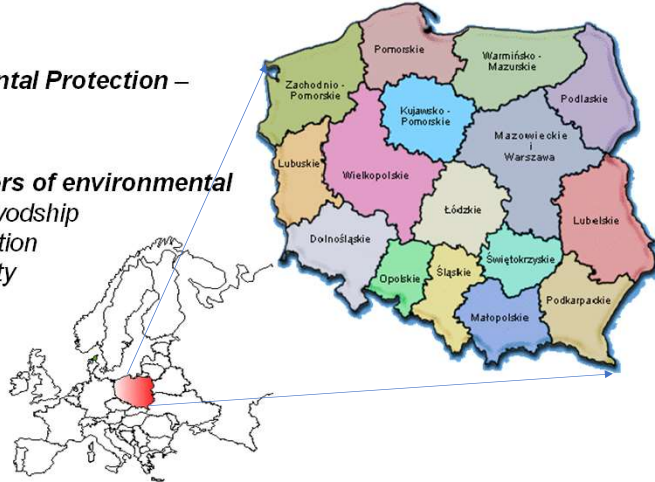
82



## Polish Inspection of Environmental Protection

### Inspection tasks are performed by:

- ❖ **the Chief Inspector of Environmental Protection** – heading IEP (as a central authority of government administration);
- ❖ **16 voivodship (regional) inspectors of environmental protection** - VIEPs as heads of voivodship inspections of environmental protection (CIEP acts as a higher-level authority for VIEPs who perform their tasks in the areas of respective voivodeships/regions).



83



## Major accidents prevention tasks

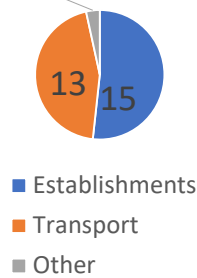
- carrying out of inspections of the establishments that may be a source of a major accident (inspection frequency: 1/year in UTE, 1/3 years in LTE),
- analysis of the causes and consequences of major accidents to the environment,
- supervising environmental recovery;
- **keeping the register of major accidents;**
- **keeping the register of the establishments that may be the source of major accident including lower (LTE) and upper (UPE) tier establishments**
- participation in land use planning process
- Cooperation with the State Fire Service (second Seveso authority in PL)

84

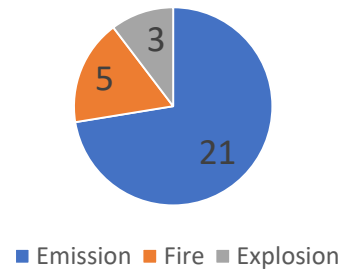


## Register of major accidents and near misses

1 Sources of major accidents and near misses in 2022



Types of the accidents and near misses

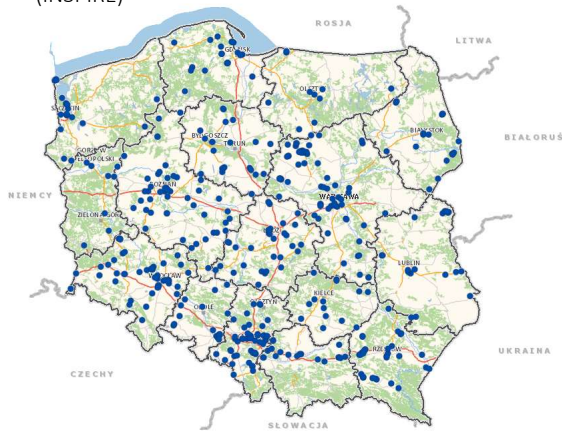


85

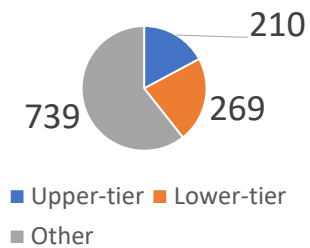


## Register of the establishments that may cause a major accident

SEVESO sites (INSPIRE)



Establishments that can be a source of a major accident as of 31...

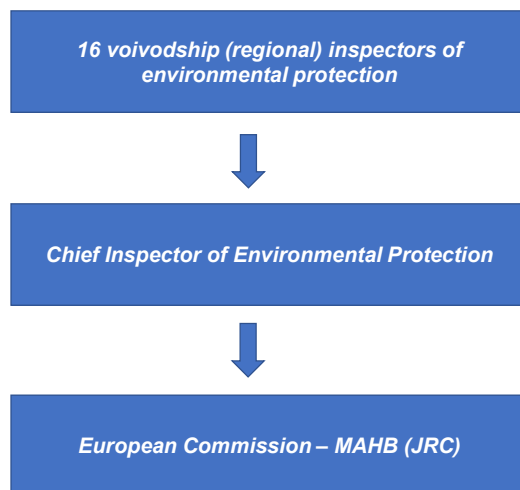


<https://inspire.gios.gov.pl/imap/#gpmap=gpMonit>

86



## Organization of the reporting process



87



## Data storage and use, technology used

### Data storage:

- Central server administered by the Chief Inspectorate of Environmental Protection

### Data use:

- reporting obligations (national and EU level)
- answering the requests for environmental information
- analysis, statistics

### Technology:

- Database was created in accordance technology - Oracle RAC 11g;
- Application development technology – J2EE (Java Enterprise Edition)

88





### ***Future national arrangements – reporting of the establishments to EEA since 2026***

- Joint reporting by one authority (currently responsible for joint reporting to the EU REGISTRY establishments covered by PRTR, IED, LCPs)
- Some of the Seveso establishments are also covered by the other legislation (for example PRTR, IED)
- Law amendment necessary so draft legislation is being prepared

89



**Thank you  
for your attention!**

[p.dadasiewicz@gios.gov.pl](mailto:p.dadasiewicz@gios.gov.pl)

90

# Seveso reporting in Belgium

Isabelle Borgonjon

Workshop Seveso Community of Practice, 27-28 November 2023, EEA



employment.belgium.be

91

## Legal basis

**Seveso Cooperation Agreement of 16.02.2016** between the Federal State and the 3 regions (Flemish, Walloon, Brussels-Capital) on the control of major-accident hazards involving dangerous substances

*Belgian OJ 20.04.2016 – Law of 01.04.2016*

+ LUP legislation at regional level  
+ implementing acts at different levels



employment.belgium.be

92

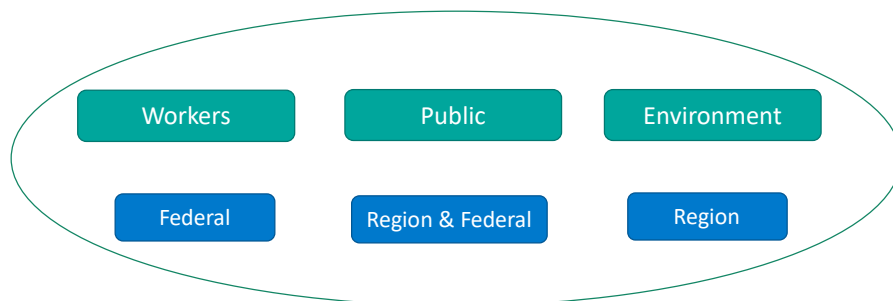
# The Seveso cooperation agreement

Transposes the **Seveso Directive 2012/18**

Implements the **UNECE Convention on the Transboundary Effects of Industrial Accidents (1992)**

Implements the **ILO C174 – Major Industrial Accidents Convention (1993)**

## Impact of a major chemical accident



**Cooperation agreement :**  
**a close cooperation and a joint exercise of competences**

## Seveso Cooperation Committee

- Established under the Cooperation Agreement, with defined missions and tasks
- Ensuring consistent implementation, including missions and tasks related to
  - Information to the public (annex V)
  - Data reporting to the EC
  - New actions/developments at EU level

## Seveso data management & reporting




- General principle
  - Data & procedures coordinated through the Seveso Cooperation Committee
  - Each competent authority (CA) is responsible for its own data management
- Information to the public (Annex V)
  - National portal website [www.seveso.be](http://www.seveso.be)
  - 'CA source holder' is legally defined per Annex V element
  - Unique identifier per establishment
  - CA's export their data monthly to the CA managing the portal
  - Excel template

## eSPIRS

- Focal Point eSPIRS appointed by the Seveso Cooperation Committee
- BE data are annually exported using the eSPIRS import tool (XML)
  - Data extracted from database (data = [www.seveso.be](http://www.seveso.be) at time of reporting)
  - Whole process: 1 day/year
  - XML is archived as proof of reporting

## eMARS

- Seveso inspection teams with inspectors of 3 inspectorates (federal & regional)
  - Common inspection plan, programme and inspection instruments
  - Each inspectorate maintains its own documentation and reporting system
- Inspectors report in eMARS
- Focal Point eMARS approves the reporting
  - Appointed by the inspection authorities and confirmed by the Seveso Cooperation Committee
  - Federal Inspectorate
  - Report (pdf) is archived as proof of reporting

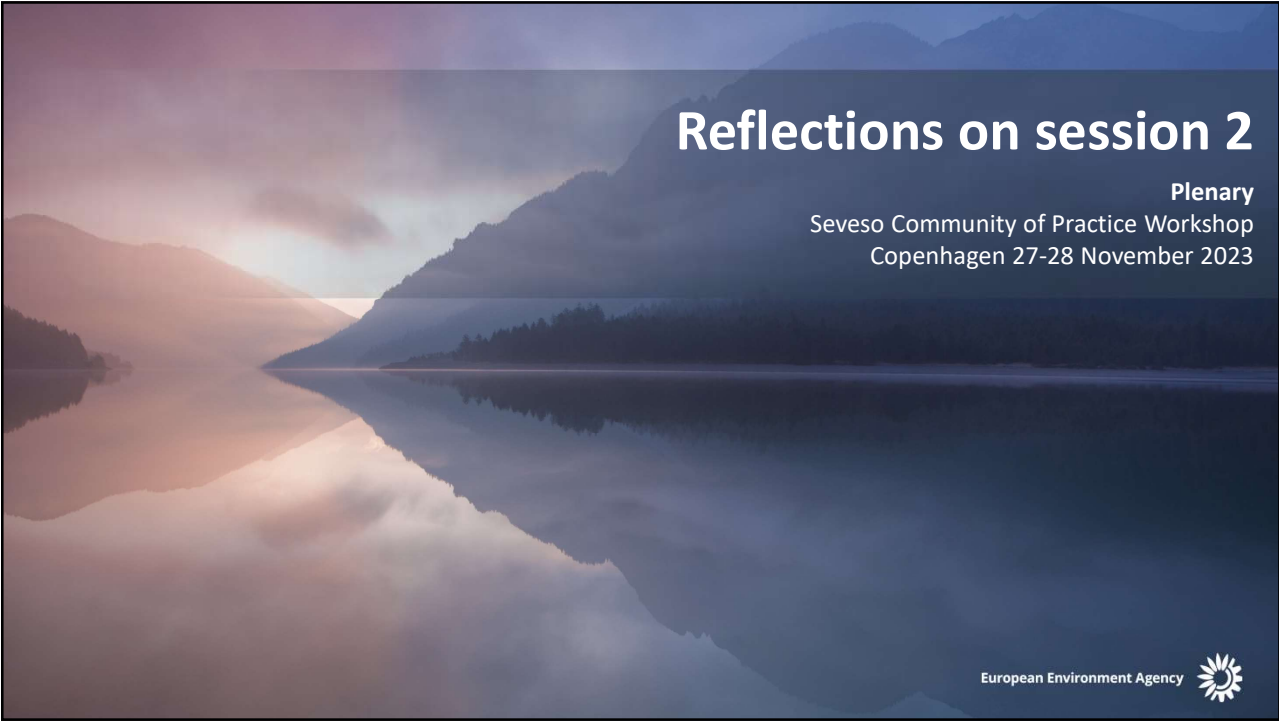


FEDERAL PUBLIC SERVICE  
Employment, Labour and  
Social Dialogue

[isabelle.borgonjon@employment.belgium.be](mailto:isabelle.borgonjon@employment.belgium.be)


employment.belgium.be

99



# Reflections on session 2

Plenary  
Seveso Community of Practice Workshop  
Copenhagen 27-28 November 2023

European Environment Agency 

- > Questions to any presentation
- > Reflections on the discussions

European Environment Agency



## Session 3: Reporting of accidents according to the Seveso Directive



12.30

Closing of the workshop

# Data model and reporting tools

Rasa Narkevičiūtė  
Seveso Community of Practice Workshop  
Copenhagen 27-28 November 2023

European Environment Agency



## A short poll

Scan the QR or use link  
to join



<https://forms.office.com/e/zPqtKwN63>

 Copy link

**<https://forms.office.com/e/zPqtKwN63>**

European Environment Agency





## Key pre-requisites

- › Requirements of Commission Decision 2009/10/EC
- › Provide similar user experience
- › Transfer and verify existing data

European Environment Agency



## Data entry for a single accident

- › Content:
  - › Does not change
- › User interface:
  - › Similar logic, entries close to existing ones
  - › Some form changes
- › Data structure and analysis tools:
  - › Opportunity for change

European Environment Agency



## Accident reporting workflow

- > Reporting tool: **Reportnet 3** – same tool as eSPIRS
- > A webform to report an individual accident
  - > Functionality already exists
- > List of accidents in a searchable table
  - > Functionality will be developed



European Environment Agency



## User roles

User type in current eMARS	User type in the EEA system	Rights in the EEA system
National Administrator (NA)	Lead reporter	Edit data, submit, add other reporters
National Reporter (NR)	Reporter - write	Edit data
National Power User (NPU)	Reporter - read	View data

**For their own country**

European Environment Agency



## User roles: example

### Lead reporter view:

 **Dataflow - Denmark**  
Test eMARS



Dataflow  
help



Accidents -  
Test schema



Release to  
data  
collection

### Reporter view:

 **Dataflow - Denmark**  
Test eMARS



Dataflow  
help



Accidents -  
Test schema

European Environment Agency



## User interface: example form for a single accident

### Current:

**Accident Profile** Accident Description Site and Installation Substances Involved Causes Consequences Emergency Response Lessons Learned Attachment Section

### Reportnet 3:

**Accident Profile** Accident Description Site and Installation Substances Involved Causes Consequences Emergency Response Lessons Learned Attachment Section

European Environment Agency



## User interface: example form for a single accident

### Current: Accident Description

Accident Description \*

**Accidents Involving**

Domino Effects   
  Natch Events   
  Transboundary Effects   
  Contractors

Other   
  Fire   
  Explosion   
  Transport   
  Other/Unknown

**Major Occurrences**

air  
 rail  
 road  
 water (sea, river, etc)

**Initiating Events**

air  
 rail  
 road  
 water (sea, river, etc)

### Reportnet 3: Accident Description

Accident Description \*

**Accidents Involving:**

Domino Effects: Transboundary Effects

Did the accident involve a release?

Did the accident involve a fire?

Did the accident involve an explosion?

Did the accident involve transport?  Yes

Type of transport involved in a main occurrence:    
 Type of transport involved in an initiating event:

Details if other type of accident not covered above

## Data structure: opportunity for change

- Example: Accident consequences
  - Form: can stay very similar
  - Underlying structure could change

Human   
  Environmental   
  Cost   
  Disruption

Onsite	Quantity
<input type="checkbox"/> At risk	<input type="text"/>
<input checked="" type="checkbox"/> Fatalities	<input type="text" value="1"/>
<input checked="" type="checkbox"/> Injuries	<input type="text" value="5"/>
<input type="checkbox"/> Other	<input type="text"/>

### Current variable representation

**Human On site  
Quantity**

Fatalities - 1.00  
Injuries - 5.00

European Environment Agency



## Data structure change: impact

- If you are a reporter:
  - Regular reporting – no change
  - Data validation upon original transfer
- If you are a user:
  - Facilitates analysis
  - Possibility for more statistics



To be discussed in more detail during in eMARS specific future events

European Environment Agency



## Exchange on the functionality of the system

Break-out groups  
Seveso Community of Practice Workshop  
Copenhagen 27-28 November 2023



European Environment Agency



## Introducing the exercise

- Aims:
    - To understand better the setup in the countries
    - To understand how the countries find the current reporting system
- >This will help guide EEA in preparing the systems

European Environment Agency

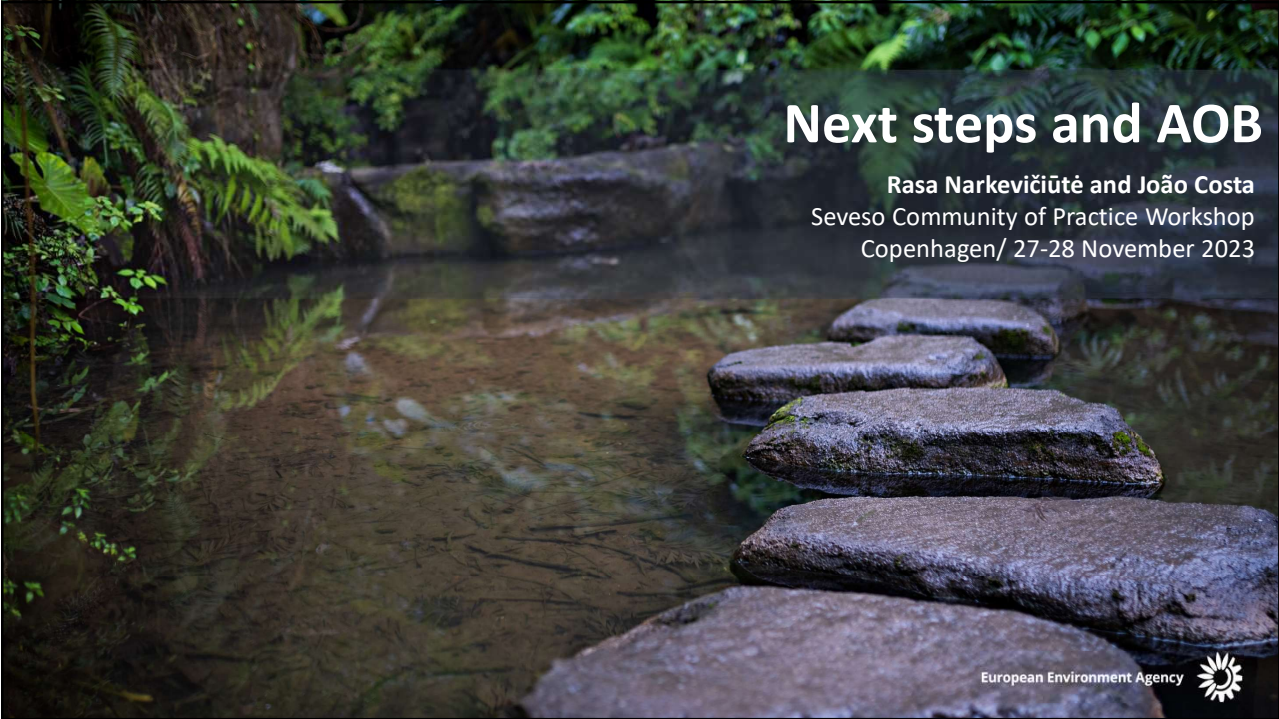


## Key themes

- Experiences with current system (ca 20 mins)
- Country setup (ca 20 mins)

European Environment Agency





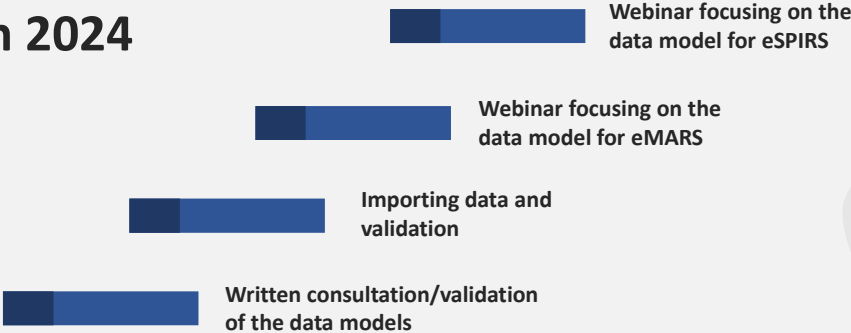
# Next steps and AOB

Rasa Narkevičiūtė and João Costa  
Seveso Community of Practice Workshop  
Copenhagen/ 27-28 November 2023



## What's next?

### First six months in 2024

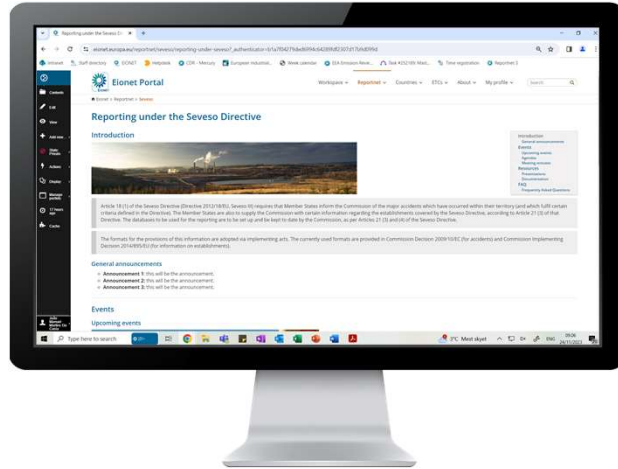


How to get in touch

- > New site
- > Write to us



## Intro to the site



European Environment Agency



# THANK YOU FOR YOUR ATTENTION



[Seveso.Helpdesk@eea.europa.eu](mailto:Seveso.Helpdesk@eea.europa.eu)

European Environment Agency 